

## IMPACT extensions 1/2"

### 509IMP

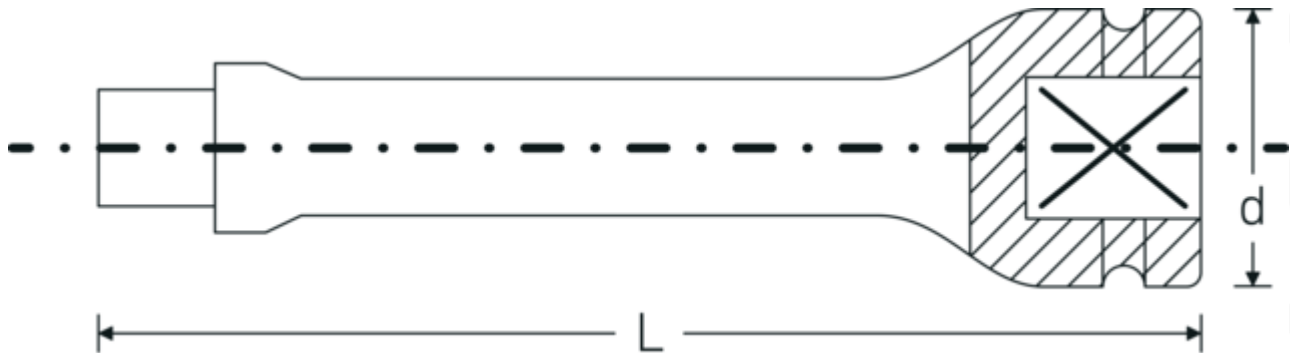


Product no. **33010001**  
GTIN **4018754017157**  
Model **509/2 IMP**

**Label.** IMPACT extension 1/2 " L.52mm

- Features.**
- 1/2" internal square drive
  - Chrome Alloy Steel, gunmetal finish

## Technical Drawing.



## Technical Attributes.

External square drive (inch)	1/2
Internal square drive (inch)	1/2 "
d	30 mm
Size	2
Length mm (L)	52 mm

## Logistics data.

Depth mm (IFS)	52
Width mm (IFS)	30
Height mm (IFS)	30
WEEE/ElektroG	nicht ear-pflichtig
Length (packed, mm)	151
Width (packed, mm)	31
Height (packed, mm)	53

<b>Volume (packed, dm3)</b>	0.248093 dm3
<b>Product no.</b>	33010001
<b>Weight (gross, kg)</b>	0,755
<b>Weight PAP (kg)</b>	0,000
<b>Weight PVC (kg)</b>	0,006
<b>GTIN</b>	4018754017157
<b>Country of origin AWR</b>	GERMANY
<b>Region of origin</b>	Nordrhein-Westfalen
<b>Customs tariff no.</b>	82042000
<b>Packing standard</b>	5
<b>Weight</b>	155 g

## Variants.

Product no.	Model no. (ERP)	Description	GTIN
33010001	509/2 IMP	IMPACT extension 1/2 " L.52mm	4018754017157
33010002	509/5 IMP	IMPACT extension 1/2 " L.130mm	4018754017164
33010003	509/10 IMP	IMPACT extension 1/2 " L.255mm	4018754017171

## GTIN-Code.

