

IMPACT extensions 3/4"

560IMP

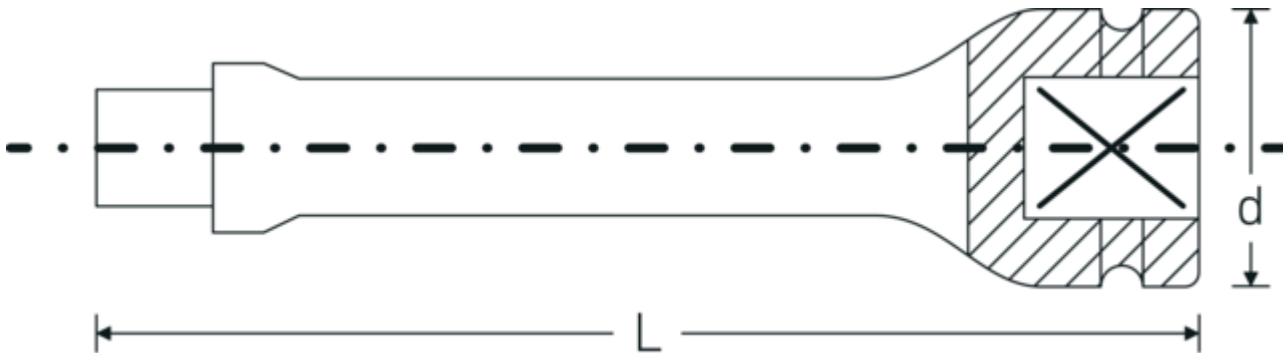


Product no. **35010003**
 GTIN **4018754017348**
 Model **560/13 IMP**

Label. IMPACT extension 3/4 " L.330mm

- Features.**
- 3/4" square drive
 - Chrome Alloy Steel, gunmetal finish

Technical Drawing.



Technical Attributes.

External square drive (inch)	3/4
Internal square drive (inch)	3/4 "
d	44 mm
Size	13
Length mm (L)	330 mm

Logistics data.

Depth mm (IFS)	332
Width mm (IFS)	45
Height mm (IFS)	45
WEEE/ElektroG	nicht ear-pflichtig
Length (packed, mm)	332
Width (packed, mm)	100
Height (packed, mm)	80

Volume (packed, dm3)	2.656 dm3
Product no.	35010003
Weight (gross, kg)	6,525
Weight PAP (kg)	0,000
Weight PVC (kg)	0,000
GTIN	4018754017348
Country of origin AWR	GERMANY
Region of origin	Nordrhein-Westfalen
Customs tariff no.	82042000
Packing standard	5
Weight	1305 g

Variants.

Product no.	Model no. (ERP)	Description	GTIN
35010001	560/7 IMP	IMPACT extension 3/4 " L.180mm	4018754017324
35010002	560/10 IMP	IMPACT extension 3/4 " L.250mm	4018754017331
35010003	560/13 IMP	IMPACT extension 3/4 " L.330mm	4018754017348

GTIN-Code.



STAHLWILLE Eduard Wille GmbH & Co. KG

Lindenallee 27 · 42349 Wuppertal · Germany · Phone: +49 202 4791-0 · Fax: +49 202 4791-200
info@stahlwille.de · www.stahlwille.com · Copyright by STAHLWILLE Eduard Wille GmbH & Co. KG, Wuppertal
Copyright by STAHLWILLE Eduard Wille GmbH & Co. KG, Wuppertal