



IMPACT extensions 3/4"

560IMP

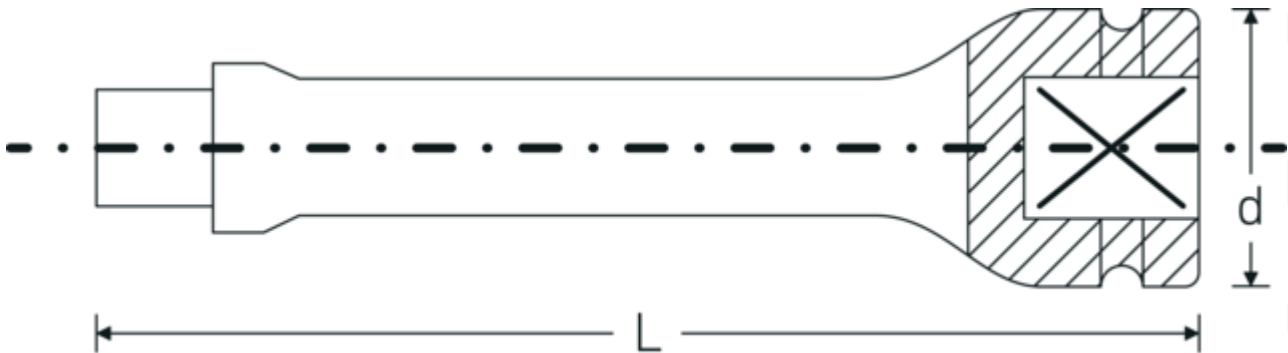


Product no. **35010002**
GTIN **4018754017331**
Model **560/10 IMP**

Label. IMPACT extension 3/4 " L.250mm

- Features.**
- 3/4" square drive
 - Chrome Alloy Steel, gunmetal finish

Technical Drawing.



Technical Attributes.

External square drive (inch)	3/4
Internal square drive (inch)	3/4 "
d	44 mm
Size	10
Length mm (L)	250 mm

Logistics data.

Depth mm (IFS)	252
Width mm (IFS)	45
Height mm (IFS)	45
WEEE/ElektroG	nicht ear-pflichtig
Length (packed, mm)	252
Width (packed, mm)	100
Height (packed, mm)	80

Volume (packed, dm3)	2.016 dm3
Product no.	35010002
Weight (gross, kg)	5,300
Weight PAP (kg)	0,000
Weight PVC (kg)	0,014
GTIN	4018754017331
Country of origin AWR	GERMANY
Region of origin	Nordrhein-Westfalen
Customs tariff no.	82042000
Packing standard	5
Weight	1050 g

Variants.

Product no.	Model no. (ERP)	Description	GTIN
35010001	560/7 IMP	IMPACT extension 3/4 " L.180mm	4018754017324
35010002	560/10 IMP	IMPACT extension 3/4 " L.250mm	4018754017331
35010003	560/13 IMP	IMPACT extension 3/4 " L.330mm	4018754017348

GTIN-Code.



STAHLWILLE Eduard Wille GmbH & Co. KG

Lindenallee 27 · 42349 Wuppertal · Germany · Phone: +49 202 4791-0 · Fax: +49 202 4791-200
info@stahlwille.de · www.stahlwille.com · Copyright by STAHLWILLE Eduard Wille GmbH & Co. KG, Wuppertal
Copyright by STAHLWILLE Eduard Wille GmbH & Co. KG, Wuppertal