

## Torque screwdriver TORSIOMAX

775/100



Product 51060100

no.

GTIN 4018754141654

Model 775/100

DREHMOMENTSCHRAUBENDREHE



### Label.

Torque screwdriver TORSIOMAX Model 775/100 Hex 1/4"

### Features.

- click-type
- for torque-controlled bolt tightening in the cN·m and in·lb ranges
- for one-off or production runs
- anticlockwise and clockwise tightening
- with 1/4" internal hex drive (F 6.3 DIN 3126/ISO1173)
- infinitely variable via micrometer scale (twist scale)
- disengaging clutch coupling prevents the preset value being exceeded
- the shape of the handle and its surface texture ensure safe and accurate transmission of torque
- insert tools: For all 1/4" hex E 6.3, PHILLIPS® head screws, POZIDRIV®/ SUPADRIV®, straight-slot, TORX®, hex bits
- certificate in accordance with DIN EN ISO 6789-2:2017
- **display deviation value ± 6%**

## Technologies and features.



### Factory calibration certificate (ISO calibration)

Our torque tools, transducers and test equipment are delivered with a factory calibration certificate in accordance with DIN EN ISO 6789-2 and based on DKD-R 10-8 for traceability of the measuring equipment.

## Technical Drawing.



## Technical Attributes.

Scale division in-lb	- in-lb
Scale division cN·m	5 cN·m
Measuring range cN·m	400-1000 cN·m
Internal hex drive (mm)	F 6,3 mm
DIN	DIN 3126 / ISO1173
Size	100
Internal hex drive [inch]	1/4 "
Length mm (L)	235 mm

## Logistics data.

Depth mm (IFS)	360
Width mm (IFS)	45
Height mm (IFS)	45
WEEE/ElektroG	nicht ear-pflichtig
Length (packed, mm)	360
Width (packed, mm)	51
Height (packed, mm)	51
Volume (packed, dm3)	0.93636 dm3
Product no.	51060100
Weight (gross, kg)	0,755
Weight PAP (kg)	0,000
Weight PVC (kg)	0,066
GTIN	4018754141654
Country of origin AWR	JAPAN
Region of origin	Ausländischer Ursprung
Customs tariff no.	82041100
Packing standard	1
Weight	630 g

## Variants.

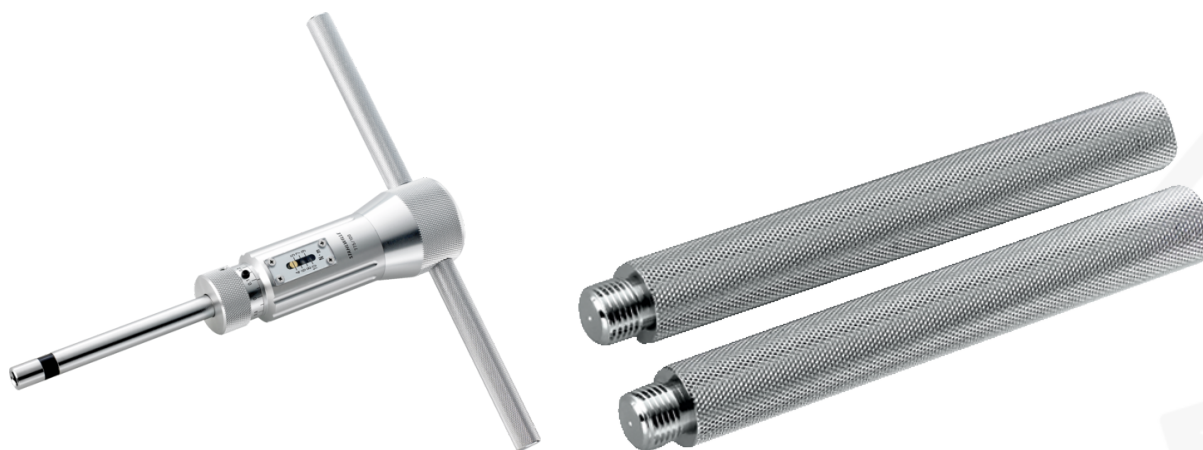
Product no.	Model no. (ERP)	Description	GTIN
51060003	775/3 DREHMOMENTSCHRAUBENDREHER	Torque screwdriver TORSIOMAX Model 775/3 Hex 1/4"	4018754141623
51060012	775/12 DREHMOMENTSCHRAUBENDREHER	Torque screwdriver TORSIOMAX Model 775/12 Hex 1/4"	4018754141630

51060030	775/30 DREHMOMENTSCHRAUBENDREHER	Torque screwdriver TORSIOMAX Model 775/30 Hex 1/4"	4018754150946
51060050	775/50 N DREHMOMENTSCHRAUBENDREHER	Torque screwdriver TORSIOMAX Model 775/50 Hex 1/4"	4018754141647
51060100	775/100 DREHMOMENTSCHRAUBENDREHER	Torque screwdriver TORSIOMAX Model 775/100 Hex 1/4"	4018754141654
51460003	775A/3 DREHMOMENTSCHRAUBENDREHER	Torque screwdriver TORSIOMAX Model 775a/3 Hex 1/4"	4018754142255
51460012	775A/12 DREHMOMENTSCHRAUBENDREHER	Torque screwdriver TORSIOMAX Model 775a/12 Hex 1/4"	4018754142262
51460050	775A/50 DREHMOMENTSCHRAUBENDREHER	Torque screwdriver TORSIOMAX Model 775a/50 Hex 1/4"	4018754142279

## GTIN-Code.



## Images.



**STAHLWILLE Eduard Wille GmbH & Co. KG**

Lindenallee 27 · 42349 Wuppertal · Germany · Phone: +49 202 4791-0 · Fax: +49 202 4791-200

info@stahlwille.de · www.stahlwille.com · Copyright by STAHLWILLE Eduard Wille GmbH & Co. KG, Wuppertal

Copyright by STAHLWILLE Eduard Wille GmbH & Co. KG, Wuppertal