

Work spotlight

13133

Product no. **77490015**
GTIN **4018754341382**
Model **13133 Arbeitsstrahler 2800**

Label. Work spotlight black-green Luminous flux (lm) 2800 lm

- Features.**
- practical light source for home, trade or industry
 - 30 W COB-LED with 2800 lm
 - adjustable lighting modes with three brightness settings: 100 %/50 %/25 %
 - lights for up to 13 hours
 - integrated Li-ion battery 3.7 v/6600 mah/24.42 Wh with safety electronics
 - rechargeable via USB-C connection
 - charging time approx. 8 hours
 - with charge control and remaining capacity display
 - 180° adjustable handle/carry handle
 - the magnetic holder enables secure attachment to metal surfaces.
 - swivel hook for hanging
 - suitable for indoor and outdoor use (IP64 certified)
 - compact and flat storage

Advantages.

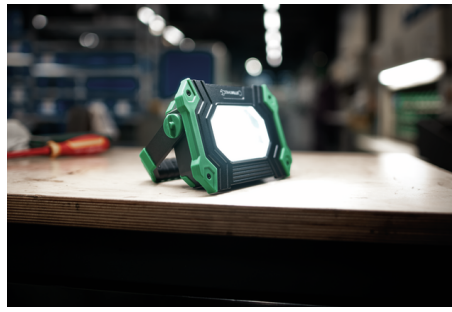
Cordless 30 watt LED spotlight with magnetic holder for indoor and outdoor work.

Powerful luminosity with up to 2800 lumens, adjustable in three brightness levels: 100 %/50 %/25 %.

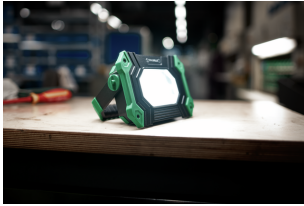
Dust-proof, splash-proof and shock-proof housing with rubberised surround.

Up to 13 hours of operating time thanks to the integrated Li-ion batteries with safety electronics (3.7V/ 6600 mAh/24.42Wh).

Practical power bank function via USB port.



Product highlights.



Impressive illumination.

The powerful LED spotlight achieves a luminosity of up to 2,800 lumens, adjustable in three brightness levels: 100% / 50% / 25%.



Flexible fastening options.

The 180° fully adjustable handle can also be used as a stable stand for precise illumination of the work area. The magnetic holder enables secure attachment to metal surfaces. The spotlight can also be hung by a rotatable hook.



For indoor and outdoor use.

Our spotlight is suitable for both indoor and outdoor use. Its shock-resistant housing with rubberised edges is dust and water spray resistant (IP64 certified).



Powerbank function via a USB port.

The spotlight can also be used as a powerbank via a USB connection, for example, to charge mobile phones or other devices. The battery is charged via a USB-C connection.

Technical Attributes.

Battery type	Li-Ionen 3,7V 6600mAh
Width mm (b)	177 mm
Colour	black-green
Height mm (h)	44 mm
Length mm (L)	129 mm
Luminous flux	2800 lm

Logistics data.

Depth mm (IFS)	177
Width mm (IFS)	129
Height mm (IFS)	44
WEEE/ElektroG	Kleingeräte B2C
Length (packed, mm)	195
Width (packed, mm)	130
Height (packed, mm)	55
Volume (packed, dm3)	1.39425 dm3
Product no.	77490015
Weight (gross, kg)	0,804

Weight PAP (kg)	0,068
Weight PVC (kg)	0,000
GTIN	4018754341382
Country of origin AWR	CHINA
Region of origin	Ausländischer Ursprung
Customs tariff no.	85131000
Packing standard	1
Weight	700 g

Variants.

Product no.	Model no. (ERP)	Description	GTIN
77490015	13133 Arbeitsstrahler 2800	Work spotlight black-green Luminous flux (lm) 2800 lm	4018754341382

GTIN-Code.



Images.



STAHLWILLE Eduard Wille GmbH & Co. KG

Lindenallee 27 · 42349 Wuppertal · Germany · Phone: +49 202 4791-0 · Fax: +49 202 4791-200

info@stahlwille.de · www.stahlwille.com · Copyright by STAHLWILLE Eduard Wille GmbH & Co. KG, Wuppertal

Copyright by STAHLWILLE Eduard Wille GmbH & Co. KG, Wuppertal