



**Calibration system No. 7706,
complete**

7706

Product no. **96521074**
GTIN **4018754180967**
Model **7706-11PC**

Label. Calibration system complete

Technical Attributes.

Width mm (b) 690 mm
Height mm (h) 600 mm
Length mm (L) 1780 mm

Logistics data.

Depth mm (IFS) 1780
Width mm (IFS) 690
Height mm (IFS) 600
Length (packed, mm) 1780
Width (packed, mm) 690
Height (packed, mm) 600
Volume (packed, dm3) 736.92 dm3
Product no. 96521074
Weight (gross, kg) 110,500
Weight PAP (kg) 0,000
Weight PVC (kg) 0,000
GTIN 4018754180967
Country of origin AWR GERMANY
Region of origin Nordrhein-Westfalen
WEEE/ElektroG Großgeräte B2B
Customs tariff no. 90318080
Packing standard 1
Weight 110500 g

Parts list.



83070026
Inlay cover foam



83070016
Inlay cover foam



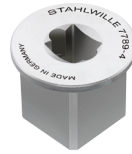
83070006
Inlay cover foam



81320002
Plastic case



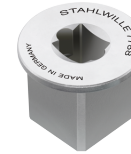
58524091
Square drive adapter



58524090
Square drive adapter



58521089
Square drive adapter



58521088
Square drive adapter



58521087
Square drive adapter



52110054
Cable



81500004
Plastic box, empty



81500003
Plastic box, empty



58243040
Calibrating square
drive insert tools



58243020
Calibrating square
drive insert tools



58243005
Calibrating square
drive insert tools



58243004
Calibrating square
drive insert tools



83071031
Insert for plastic box



83071030
Insert for plastic box



52110192
Extension unit for
No.7792 up to 3000
N·m



52110092
Mechanical loaders unit
to 1000 N·m

