

Electronic torque wrench w. permanently installed fine-tooth ratchet

701/2



Product no. **96504502**
GTIN **4018754243693**
Model **701/2**



Label.

Electronic torque wrench SENSOTORK® 701/2 1-20N·m 1/4" L. 210mm

Features.

- indicating
- slim, compact shape for smaller torques from 1 N·m upwards
- measuring units: N·m, cN·m, ft·lb, in·lb
- measurements independent of the point of application of force
- additional functions using SensoMaster 4 software (not included, free download at www.stahlwille.com):
 - adjustable joints
 - evaluation of tightening operation by means of coloured LEDs, buzzer and vibration
 - alibrating interval adjustable
 - logging function
- supplied with 3.6 V lithium battery, type 14500, packed in accordance with UN3091, Class 9
- calibration in conjunction with perfectControl® calibrating unit No 7794 or complete calibration system No 7706. Readjustment does not require disassembly
- certificate in accordance with DIN EN ISO 6789-2:2017
- in sturdy plastic box
- **display deviation value ± 4%**

Advantages.

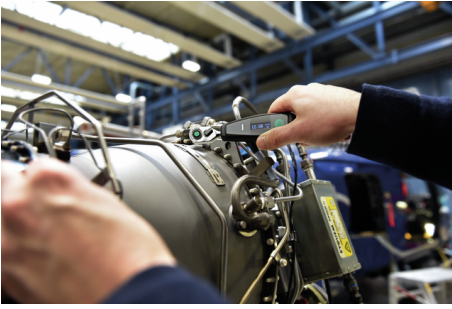
Electronic torque wrench for a small measuring range of 1-20 N·m.

The compact design with built-in fine-tooth ratchet makes precise screw tightening possible, even in confined spaces.

The QuickRelease safety lock protects against unintentional loosening and allows tools to be changed quickly.

Displaying with acoustic, haptic and visual evaluation of the torque achieved.

Simple documentation of the measured values on the PC via the USB interface.



Product highlights.



Compact.

With a compact length of only 21 cm, it is ideally suited to safe, accurate work in confined spaces.



Versatile.

For torques from 1 to 20 N·m - the ideal choice for bolt tightening on modern materials such as plastic, carbon and aluminium, for state-of-the-art bicycles with carbon frames, for example.



Intuitive use.

The required mode of operation (track, peak hold, user (fastener evaluation)) can be quickly and easily set using the single button setting system.



Accurate.

Accuracy counts - uncertainty is reduced to a minimum to guarantee accurate readings.

Comprehensive documentation.

Our electromechanical torque wrenches can be documented. They can be easily configured and programmed using the SensoMaster software. This means that all data can be read out, stored and subjected to further processing on the PC for better monitoring and optimisation of the work processes. The digital measurement also allows the actual torque which has been applied (actual value) to be specified after triggering, as well as the target value.



Technologies and features.



QuickRelease

The QuickRelease safety lock prevents unintentional loss of insert tools. These click securely into place, and are only released again at the push of a button for a quick tool change.



2-component handle

Our 2-component handle is non-slip and ergonomically designed. It is resistant to the most common oils, greases, fuels, brake fluids and Skydrol. The arrow markings on the handle indicate the direction of operation.



Fine-tooth ratchet mechanism

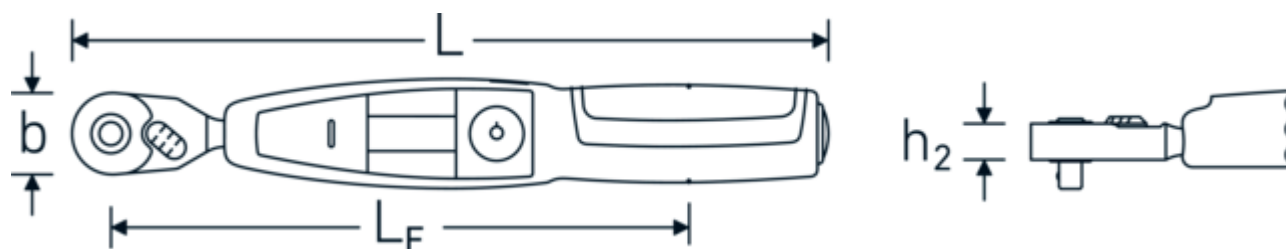
Our fine-tooth ratchets with 80 teeth re-engage after just 4.5° for maximum precision in confined spaces. 8 pairs of parallel teeth simultaneously ensure maximum load-bearing capacity and particularly smooth running, even at high torques.



Factory calibration certificate (ISO calibration)

Our torque tools, transducers and test equipment are delivered with a factory calibration certificate in accordance with DIN EN ISO 6789-2 and based on DKD-R 10-8 for traceability of the measuring equipment.

Technical Drawing.



Technical Attributes.

Scale division in-lb	9-180 in·lb
Scale division ft·lb	0,7-15 ft·lb
Measuring range N·m	1-20 N·m
Measuring range cN·m	100-2000 cN·m
External square drive (inch)	1/4
Battery type	Lithium-Batterie 3,6 V, Typ 14500
Width mm (b)	22.6 mm
DIN	DIN EN ISO 6789-2:2017
Weight with box	710 g
Height mm (h1)	26 mm
Height mm (h2)	10 mm
Length mm (L)	210 mm
LF	160 mm

Logistics data.

Depth mm (IFS)	325
Width mm (IFS)	135
Height mm (IFS)	60
Length (packed, mm)	325
Width (packed, mm)	135
Height (packed, mm)	60
Volume (packed, dm ³)	2.6325 dm ³
Product no.	96504502
Weight (gross, kg)	0,725
Weight PAP (kg)	0,080
Weight PVC (kg)	0,000
GTIN	4018754243693
Country of origin AWR	GERMANY
Region of origin	Nordrhein-Westfalen

MA N·m	1 N·m	WEEE/ElektroG	Kleingeräte B2C
Nominal value N·m	20 N·m	Customs tariff no.	82041100
		Packing standard	1
		Weight	145 g

Parts list.



50450002
Electronic torque
wrench SENSOTORK®



81261011
Socket set



51110057
USB cable

Variants.

Product no.	Model no. (ERP)	Description	GTIN
50450002	701/2	Electronic torque wrench SENSOTORK® 701/2 1-20N·m 1/4" L. 210mm	4018754243679
96504502	701/2	Electronic torque wrench SENSOTORK® 701/2 1-20N·m 1/4" L. 210mm	4018754243693
96504602	701/2 NO BATTERY	Electronic torque wrench SENSOTORK® 701/2 1-20N·m 1/4" L. 210mm	4018754280919

GTIN-Code.



Spare parts/spare part for.



59220007
Lithium-ion battery

Images.

