



IMPACT extensions 1/2"

509IMP

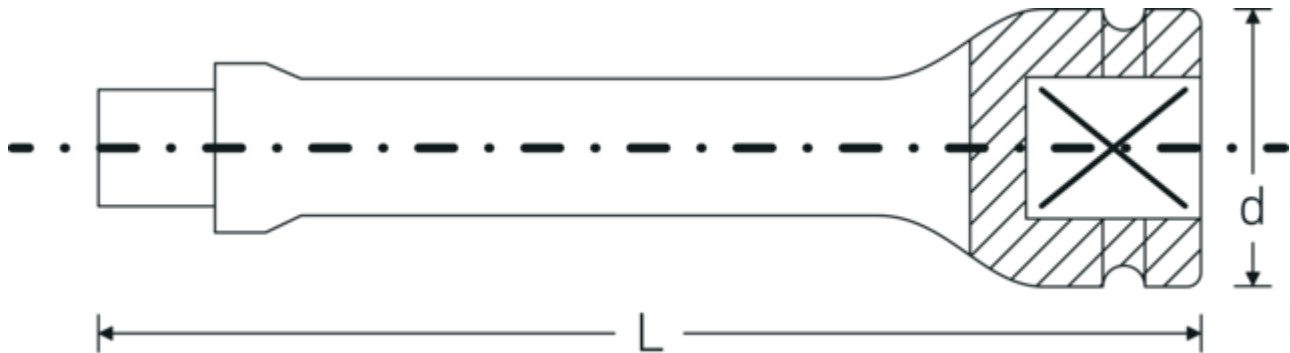


Product no. **33010001**
GTIN **4018754017157**
Model **509/2 IMP**

Label. Extension 1/2 " L.52mm

- Features.**
- 1/2" internal square drive
 - Chrome Alloy Steel, gunmetal finish

Technical Drawing.



Technical Attributes.

External square drive (inch)	1/2
Internal square drive (inch)	1/2 "
d	30 mm
Size	2
Length mm (L)	52 mm

Logistics data.

Depth mm (IFS)	52
Width mm (IFS)	30
Height mm (IFS)	30
Length (packed, mm)	151
Width (packed, mm)	31
Height (packed, mm)	53
Volume (packed, dm3)	0.248093 dm3

Product no.	33010001
Weight (gross, kg)	0,755
Weight PAP (kg)	0,000
Weight PVC (kg)	0,006
GTIN	4018754017157
Country of origin AWR	GERMANY
Region of origin	Nordrhein-Westfalen
WEEE/ElektroG	nicht ear-pflichtig
Customs tariff no.	82042000
Packing standard	5
Weight	155 g

Variants.

Product no.	Model no. (ERP)	Description	GTIN
33010001	509/2 IMP	Extension 1/2 " L.52mm	4018754017157
33010002	509/5 IMP	Extension 1/2 " L.130mm	4018754017164
33010003	509/10 IMP	Extension 1/2 " L.255mm	4018754017171

GTIN-Code.

