



## IMPACT extensions 1/2"

### 509IMP

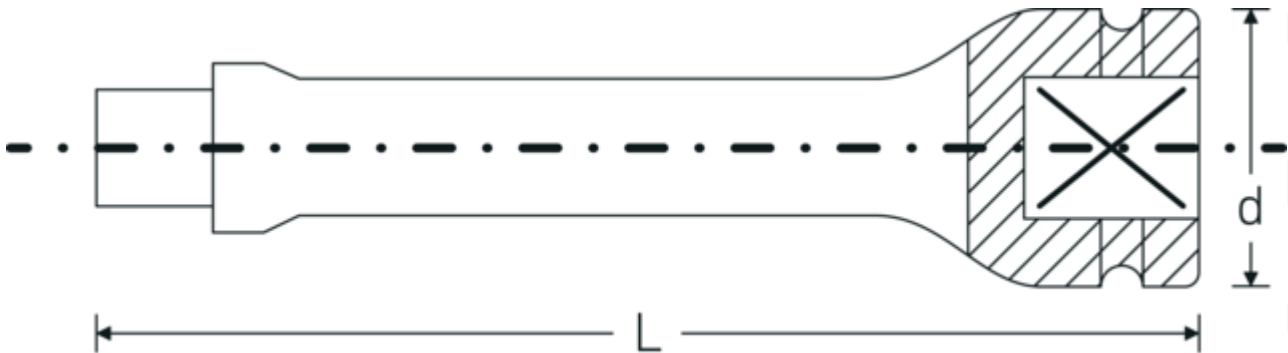


Product no. **33010002**  
GTIN **4018754017164**  
Model **509/5 IMP**

**Label.** Extension 1/2 " L.130mm

- Features.**
- 1/2" internal square drive
  - Chrome Alloy Steel, gunmetal finish

## Technical Drawing.



## Technical Attributes.

External square drive (inch)	1/2
Internal square drive (inch)	1/2 "
d	30 mm
Size	5
Length mm (L)	130 mm

## Logistics data.

Depth mm (IFS)	131
Width mm (IFS)	31
Height mm (IFS)	31
Length (packed, mm)	133
Width (packed, mm)	60
Height (packed, mm)	50
Volume (packed, dm3)	0.399 dm3

<b>Product no.</b>	33010002
<b>Weight (gross, kg)</b>	1,355
<b>Weight PAP (kg)</b>	0,000
<b>Weight PVC (kg)</b>	0,008
<b>GTIN</b>	4018754017164
<b>Country of origin AWR</b>	GERMANY
<b>Region of origin</b>	Nordrhein-Westfalen
<b>WEEE/ElektroG</b>	nicht ear-pflichtig
<b>Customs tariff no.</b>	82042000
<b>Packing standard</b>	5
<b>Weight</b>	271 g

## Variants.

Product no.	Model no. (ERP)	Description	GTIN
33010001	509/2 IMP	Extension 1/2 " L.52mm	4018754017157
33010002	509/5 IMP	Extension 1/2 " L.130mm	4018754017164
33010003	509/10 IMP	Extension 1/2 " L.255mm	4018754017171

## GTIN-Code.

