

## Work spotlight

**13133**

Product no. **77490015**  
GTIN **4018754341382**  
Model **13133 Arbeitsstrahler 2800**

**Label.** Work spotlight black-green Luminous flux (lm) 2800 lm

- Features.**
- practical light source for home, trade or industry
  - 30 W COB-LED with 2800 lm
  - adjustable lighting modes with three brightness settings: 100 %/50 %/25 %
  - lights for up to 13 hours
  - integrated Li-ion battery 3.7 v/6600 mah/24.42 Wh with safety electronics
  - rechargeable via USB-C connection
  - charging time approx. 8 hours
  - with charge control and remaining capacity display
  - 180° adjustable handle/carry handle
  - the magnetic holder enables secure attachment to metal surfaces.
  - swivel hook for hanging
  - suitable for indoor and outdoor use (IP64 certified)
  - compact and flat storage

## Advantages.

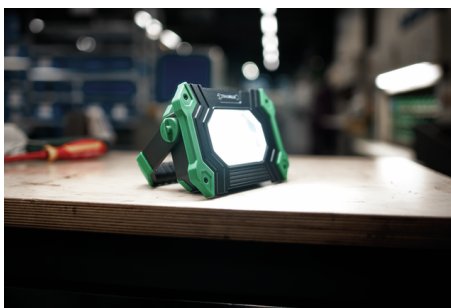
Cordless 30 watt LED spotlight with magnetic holder for indoor and outdoor work.

Up to 13 hours of operating time thanks to the integrated Li-ion batteries with safety electronics (3.7V/6600 mAh/24.42Wh).

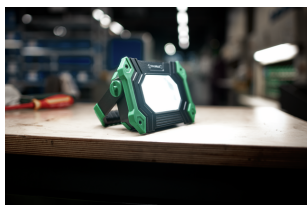
Powerful luminosity with up to 2800 lumens, adjustable in three brightness levels: 100 %/50 %/25 %.

Practical power bank function via USB port.

Dust-proof, splash-proof and shock-proof housing with rubberised surround.



## Product highlights.



### Impressive illumination.

The powerful LED spotlight achieves a luminosity of up to 2,800 lumens, adjustable in three brightness levels: 100% / 50% / 25%.



### Flexible fastening options.

The 180° fully adjustable handle can also be used as a stable stand for precise illumination of the work area. The magnetic holder enables secure attachment to metal surfaces. The spotlight can also be hung by a rotatable hook.



### For indoor and outdoor use.

Our spotlight is suitable for both indoor and outdoor use. Its shock-resistant housing with rubberised edges is dust and water spray resistant (IP64 certified).



### Powerbank function via a USB port.

The spotlight can also be used as a powerbank via a USB connection, for example, to charge mobile phones or other devices. The battery is charged via a USB-C connection.

## Technical Attributes.

Battery type	Li-Ionen 3,7V 6600mAh
Width mm (b)	177 mm
Colour	black-green
Height mm (h)	44 mm
Length mm (L)	129 mm
Luminous flux	2800 lm

## Logistics data.

Depth mm (IFS)	177
Width mm (IFS)	129
Height mm (IFS)	44
Length (packed, mm)	195
Width (packed, mm)	130
Height (packed, mm)	55
Volume (packed, dm <sup>3</sup> )	1.39425 dm <sup>3</sup>
Product no.	77490015
Weight (gross, kg)	0,804
Weight PAP (kg)	0,068

<b>Weight PVC (kg)</b>	0,000
<b>GTIN</b>	4018754341382
<b>Country of origin AWR</b>	CHINA
<b>Region of origin</b>	Ausländischer Ursprung
<b>WEEE/ElektroG</b>	Kleingeräte B2C
<b>Customs tariff no.</b>	85131000
<b>Packing standard</b>	1
<b>Weight</b>	700 g

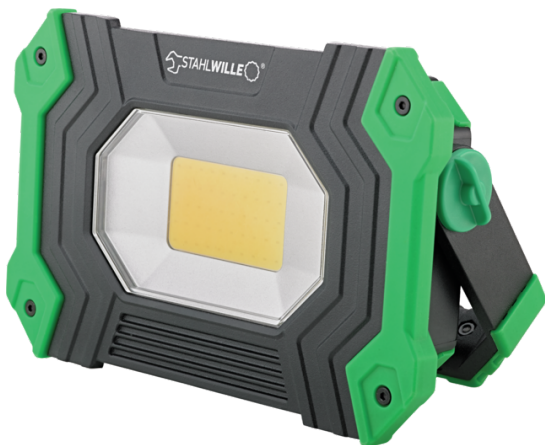
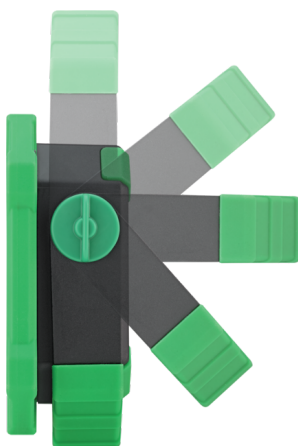
## Variants.

Product no.	Model no. (ERP)	Description	GTIN
77490015	13133 Arbeitsstrahler 2800	Work spotlight black-green Luminous flux (lm) 2800 lm	4018754341382

## GTIN-Code.



## Images.



**STAHLWILLE Eduard Wille GmbH & Co. KG**

Lindenallee 27 · 42349 Wuppertal · Germany · Phone: +49 202 4791-0 · Fax: +49 202 4791-200  
info@stahlwille.de · www.stahlwille.com · Copyright by STAHLWILLE Eduard Wille GmbH & Co. KG, Wuppertal  
Copyright by STAHLWILLE Eduard Wille GmbH & Co. KG, Wuppertal