

IMPACT extensions 3/4"

560IMP

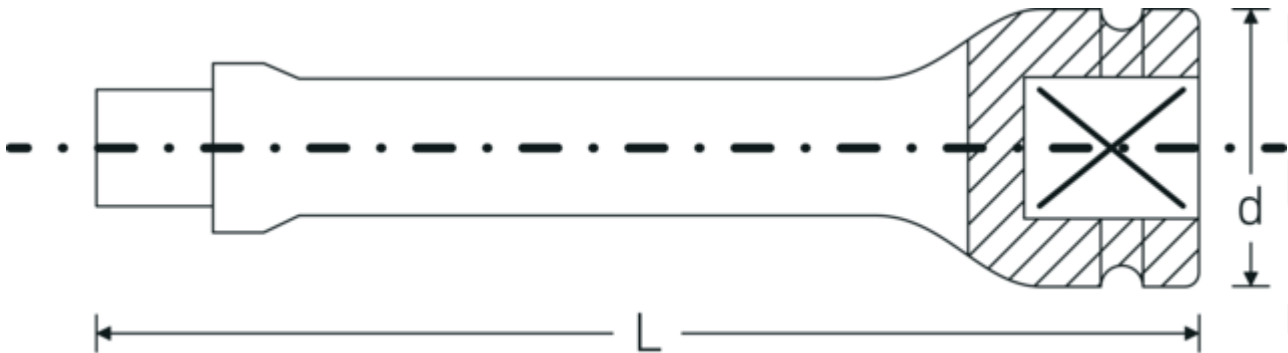


Product no. **35010001**
 GTIN **4018754017324**
 Model **560/7 IMP**

Label. Extension 3/4 " L.180mm

- Features.**
- 3/4" square drive
 - Chrome Alloy Steel, gunmetal finish

Technical Drawing.



Technical Attributes.

External square drive (inch)	3/4
Internal square drive (inch)	3/4 "
d	44 mm
Size	7
Length mm (L)	180 mm

Logistics data.

Depth mm (IFS)	180
Width mm (IFS)	44
Height mm (IFS)	44
Length (packed, mm)	200
Width (packed, mm)	100
Height (packed, mm)	80
Volume (packed, dm3)	1.6 dm3

Product no.	35010001
Weight (gross, kg)	4,025
Weight PAP (kg)	0,000
Weight PVC (kg)	0,020
GTIN	4018754017324
Country of origin AWR	GERMANY
Region of origin	Nordrhein-Westfalen
WEEE/ElektroG	nicht ear-pflichtig
Customs tariff no.	82042000
Packing standard	5
Weight	805 g

Variants.

Product no.	Model no. (ERP)	Description	GTIN
35010001	560/7 IMP	Extension 3/4 " L.180mm	4018754017324
35010002	560/10 IMP	Extension 3/4 " L.250mm	4018754017331
35010003	560/13 IMP	Extension 3/4 " L.330mm	4018754017348

GTIN-Code.



STAHLWILLE Eduard Wille GmbH & Co. KG

Lindenallee 27 · 42349 Wuppertal · Germany · Phone: +49 202 4791-0 · Fax: +49 202 4791-200
info@stahlwille.de · www.stahlwille.com · Copyright by STAHLWILLE Eduard Wille GmbH & Co. KG, Wuppertal
Copyright by STAHLWILLE Eduard Wille GmbH & Co. KG, Wuppertal