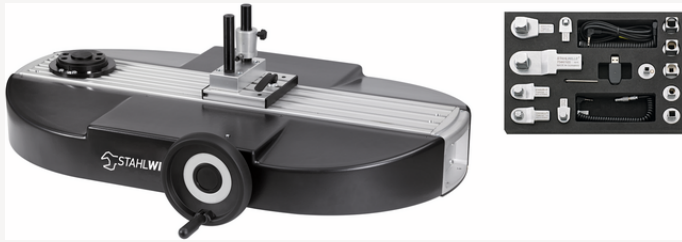


Manual calibrating unit from 1 to 400 N-m

7794-1



Product no. 96521092
GTIN 4018754214884
Model 7794 - 1

Label.

Manual calibration device

Features.

- as for perfectControl® No 7794-2, but the drive is via an ergonomically designed handwheel
- **calibration up to 1000 N-m is possible using the easily attached extension unit No 7791-1**
- protected by national and international patents
- supplied without torque wrench, transducer or notebook

Content:

- 6 calibrating square drive insert tools No 734K (sizes 4, 5, 12, 20, 40, 100)
- 6 square drive adaptors (No 409M, No 7787, No 7788, No 7789, No 7789-4, No 7789-5)
- 1 USB adaptor No 7757-1
- 1 software TorkMaster 7731-1
- 1 jack cable No 7751
- 1 spiral cable No 7752
- 1 spiral cable No 7751-2 with jack plug and self-locking precision plug
- 1 low-temperature cable connector
- 1 hexagon key wrench No 10760CV size 2 mm are included

Advantages.

Design as perfectControl® No. 7794-2, but drive via ergonomically shaped handwheel.



Technical Attributes.

Width mm (b)	705 mm
Functional length (LF) max. mm	815 mm
for transducers	7728 (sizes 1-100)
Height mm (h)	355 mm
Length mm (L)	1060 mm
Profile width	180 mm

Logistics data.

Depth mm (IFS)	1200
Width mm (IFS)	800
Height mm (IFS)	820
Length (packed, mm)	1200
Width (packed, mm)	800
Height (packed, mm)	820
Volume (packed, dm ³)	787.2 dm ³
Product no.	96521092
Weight (gross, kg)	46,400
Weight PAP (kg)	0,000
Weight PVC (kg)	0,000
GTIN	4018754214884
Country of origin AWR	GERMANY
Region of origin	Nordrhein-Westfalen
WEEE/ElektroG	Kleingeräte B2C
Customs tariff no.	90319000
Packing standard	1
Weight	46400 g

Parts list.



52111192
Calibration system



83585224
Insert for tool
assortment



52110058
Lemo cable



11030010
Adapter



43150002
Hex key for socket head
screws



52110052
Spiral cable



52110051
Jack cable



52111057
USB adaptor

Variants.

Product no.	Model no. (ERP)	Description	GTIN
96521092	7794 - 1	Manual calibration device	4018754214884

GTIN-Code.



STAHLWILLE Eduard Wille GmbH & Co. KG

Lindenallee 27 · 42349 Wuppertal · Germany · Phone: +49 202 4791-0 · Fax: +49 202 4791-200
info@stahlwille.de · www.stahlwille.com · Copyright by STAHLWILLE Eduard Wille GmbH & Co. KG, Wuppertal
Copyright by STAHLWILLE Eduard Wille GmbH & Co. KG, Wuppertal