



Spiral cable

7752

Product no. **52110052**
 GTIN **4018754155392**
 Model **SPIRALISIERTE LEITUNG 2 X
 KLINKE 7752**

Label. Spiral cable L. 0,5m

- Features.**
- connection between transducer and display unit or USB adaptor
 - with jacks at both ends, 90° angled

Advantages.

Connection between the sensor and the display device or USB adapter

Technical Attributes.

L (m) 0,5 m

Logistics data.

Depth mm (IFS)	260
Width mm (IFS)	50
Height mm (IFS)	14
Length (packed, mm)	260
Width (packed, mm)	50
Height (packed, mm)	14
Volume (packed, dm3)	0.182 dm3
Product no.	52110052
Weight (gross, kg)	0,030
Weight PAP (kg)	0,000
Weight PVC (kg)	0,003
GTIN	4018754155392
Country of origin AWR	OHNE
Region of origin	Ausländischer Ursprung
WEEE/ElektroG	Kl. Geräte der ITK

Customs tariff no. 85444290
Packing standard 1
Weight 35 g

Variants.

Product no.	Model no. (ERP)	Description	GTIN
52110052	SPIRALISIERTE LEITUNG 2 X KLINKE 7752	Spiral cable L. 0,5m	4018754155392

GTIN-Code.



Accessories.



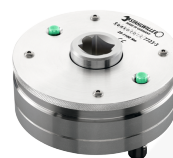
52100050
Display device for
torque display



96521021
Transducer



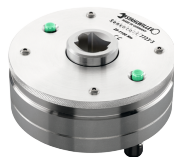
96521000
Transducer



96521026
Transducer



96521022
Transducer



96521023
Transducer



96522023
Transducer



96521028
Transducer



96521029
Transducer



STAHLWILLE Eduard Wille GmbH & Co. KG

Lindenallee 27 · 42349 Wuppertal · Germany · Phone: +49 202 4791-0 · Fax: +49 202 4791-200
info@stahlwille.de · www.stahlwille.com · Copyright by STAHLWILLE Eduard Wille GmbH & Co. KG, Wuppertal
Copyright by STAHLWILLE Eduard Wille GmbH & Co. KG, Wuppertal