



## IMPACT extensions 1/2"

### 509IMP

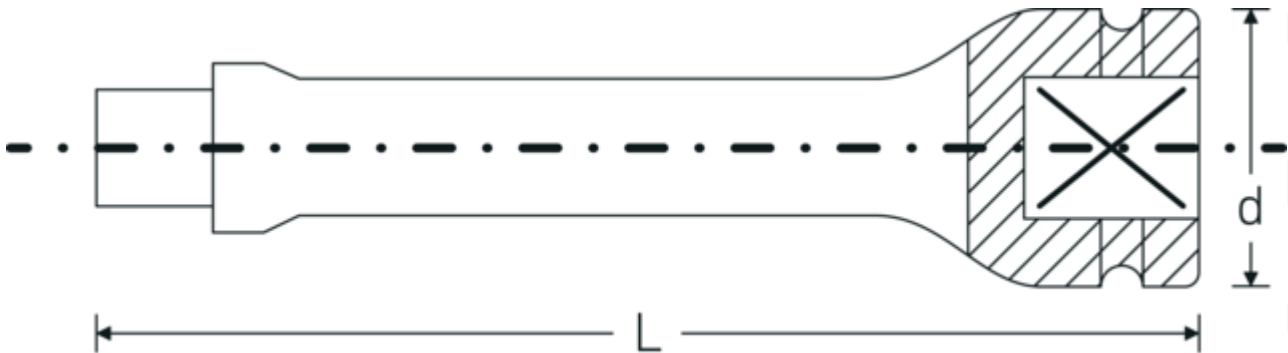


Product no. **33010003**  
 GTIN **4018754017171**  
 Model **509/10 IMP**

**Label.** Extension 1/2 " L.255mm

- Features.**
- 1/2" internal square drive
  - Chrome Alloy Steel, gunmetal finish

## Technical Drawing.



## Technical Attributes.

|                              |        |
|------------------------------|--------|
| External square drive (inch) | 1/2    |
| Internal square drive (inch) | 1/2 "  |
| d                            | 30 mm  |
| Size                         | 10     |
| Length mm (L)                | 255 mm |

## Logistics data.

|                      |             |
|----------------------|-------------|
| Depth mm (IFS)       | 256         |
| Width mm (IFS)       | 30          |
| Height mm (IFS)      | 30          |
| Length (packed, mm)  | 256         |
| Width (packed, mm)   | 80          |
| Height (packed, mm)  | 57          |
| Volume (packed, dm3) | 1.16736 dm3 |

|                              |                     |
|------------------------------|---------------------|
| <b>Product no.</b>           | 33010003            |
| <b>Weight (gross, kg)</b>    | 2,260               |
| <b>Weight PAP (kg)</b>       | 0,000               |
| <b>Weight PVC (kg)</b>       | 0,012               |
| <b>GTIN</b>                  | 4018754017171       |
| <b>Country of origin AWR</b> | GERMANY             |
| <b>Region of origin</b>      | Nordrhein-Westfalen |
| <b>WEEE/ElektroG</b>         | nicht ear-pflichtig |
| <b>Customs tariff no.</b>    | 82042000            |
| <b>Packing standard</b>      | 5                   |
| <b>Weight</b>                | 452 g               |

## Variants.

| Product no. | Model no. (ERP) | Description             | GTIN          |
|-------------|-----------------|-------------------------|---------------|
| 33010001    | 509/2 IMP       | Extension 1/2 " L.52mm  | 4018754017157 |
| 33010002    | 509/5 IMP       | Extension 1/2 " L.130mm | 4018754017164 |
| 33010003    | 509/10 IMP      | Extension 1/2 " L.255mm | 4018754017171 |

## GTIN-Code.

