



## Tool trolley 93/6 A + TOP BOX + work spotlight

93/6

Product no. 98830196  
GTIN 4018754343324  
Model 93 Trolley + Box

### Label.

Tool trolley 93/6 A + TOP BOX + work lamp 93/6 10 Drawers 0 x 0 x 0 mm TTS 93/6 anthracite, RAL 7016, 93 TOP BOX black, RAL 9005

### Features.

#### Top feature tool trolley

- **two-stage safety concept:**

1. central locking through cylinder lock with hinged key
2. tilt protection – makes it impossible to pull out several drawers at the same time

- 2 handles
- all-round ram protection
- durable plastic tray made of ABS with compartments for small parts
- oil- and acid-resistant smooth-running wheels (D.125 mm) with thread guards to protect the bearings from dirt and threads, with two locking brakes
- hole pattern on both sides for hooks no. 8031-8041, e.g., for larger tools
- can be fitted with STAHLWILLE standard and TCS inserts
- 6 easily removable drawers (black, RAL 9005) with full extension (370 mm) and ball bearing cage guide
- with paper roll holder

#### Top feature TOP BOX

- **two-stage safety concept:**

1. central locking through cylinder lock with hinged key
2. tilt protection – makes it impossible to pull out several drawers at the same time

- powder coated body and drawers (black, RAL 9005)
- 4 easily removable drawers with full extension (370 mm) and ball bearing cage guide
- durable plastic tray made of ABS with compartments for small parts
- hole pattern on both sides for hooks no. 8031-8041, e.g., for larger tools
- can be fitted with STAHLWILLE standard and TCS inserts

#### TOP feature spotlight

- Integrated battery
- Adjustable light angle
- Sturdy plastic case
- Brightness: 2800 lm

## Technologies and features.



### Tool Control System

The intelligent modular insert system protects and organises the tools in tool boxes, workshop trolleys and workshop benches. Two-colour foam inlays make checking the completeness of the tools quick and easy.

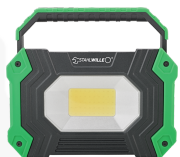
## Technical Attributes.

Number of drawers	10
Colour	TTS 93/6 anthracite, RAL 7016, 93 TOP BOX black, RAL 9005
Colour abbreviation	Ral 7016; RAL 9005
Height mm (h)	0 mm
Length mm (L)	0 mm
Internal drawer dimensions mm	351 x 530 x 68 mm (8x) 351 x 530 x 145 mm (1x) 351 x 530 x 198 mm (1x)
Drawer load capacity	30 kg 30 kg 45 kg

## Logistics data.

Depth mm (IFS)	800
Width mm (IFS)	565
Height mm (IFS)	1450
Length (packed, mm)	800
Width (packed, mm)	565
Height (packed, mm)	1450
Volume (packed, dm3)	655.4 dm3
Product no.	98830196
Weight (gross, kg)	107,500
Weight PAP (kg)	8,500
Weight PVC (kg)	0,000
GTIN	4018754343324
Country of origin AWR	CHINA
Region of origin	Ausländischer Ursprung
WEEE/ElektroG	nicht ear-pflichtig
Customs tariff no.	94032080
Packing standard	1
Weight	107500 g

## Parts list.



77490015  
Work spotlight



81200157  
Tool box



81200154  
Tool trolley

## Variants.

Product no.	Model no. (ERP)	Description	GTIN
98830196	93 Trolley + Box	Tool trolley 93/6 A + TOP BOX + work lamp 93/6 10 Drawers 0 x 0 x 0 mm TTS 93/6 anthracite, RAL 7016, 93 TOP BOX black, RAL 9005	4018754343324

## GTIN-Code.



## Images.





**STAHLWILLE Eduard Wille GmbH & Co. KG**

Lindenallee 27 · 42349 Wuppertal · Germany · Phone: +49 202 4791-0 · Fax: +49 202 4791-200  
info@stahlwille.de · www.stahlwille.com · Copyright by STAHLWILLE Eduard Wille GmbH & Co. KG, Wuppertal  
Copyright by STAHLWILLE Eduard Wille GmbH & Co. KG, Wuppertal