



## IMPACT extensions 3/4"

### 560IMP

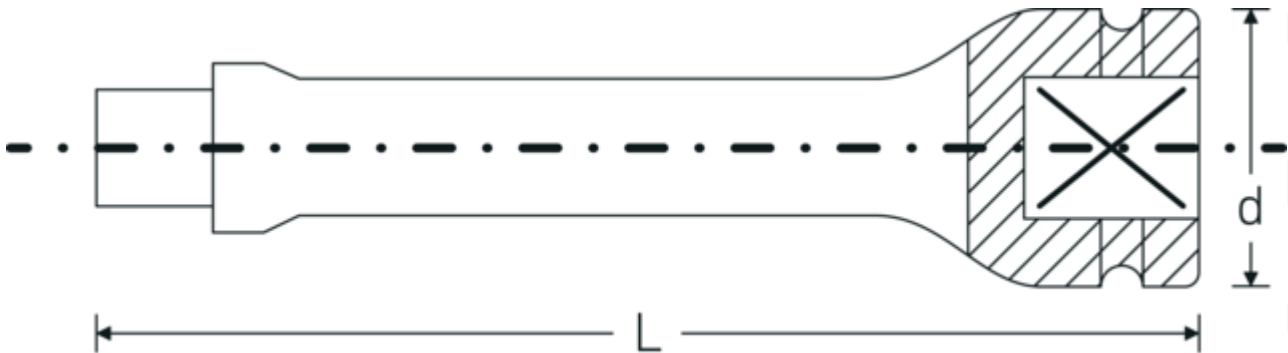


Product no. **35010001**  
GTIN **4018754017324**  
Model **560/7 IMP**

**Label.** Extension 3/4 " L.180mm

- Features.**
- 3/4" internal square drive
  - Chrome Alloy Steel, gunmetal finish

## Technical Drawing.



## Technical Attributes.

External square drive (inch)	3/4
Internal square drive (inch)	3/4 "
d	44 mm
Size	7
Length mm (L)	180 mm

## Logistics data.

Depth mm (IFS)	180
Width mm (IFS)	44
Height mm (IFS)	44
Length (packed, mm)	200
Width (packed, mm)	100
Height (packed, mm)	80
Volume (packed, dm <sup>3</sup> )	1.6 dm <sup>3</sup>

<b>Product no.</b>	35010001
<b>Weight (gross, kg)</b>	4,025
<b>Weight PAP (kg)</b>	0,000
<b>Weight PVC (kg)</b>	0,020
<b>GTIN</b>	4018754017324
<b>Country of origin AWR</b>	GERMANY
<b>Region of origin</b>	Nordrhein-Westfalen
<b>WEEE/ElektroG</b>	nicht ear-pflichtig
<b>Customs tariff no.</b>	82042000
<b>Packing standard</b>	5
<b>Weight</b>	805 g

## Variants.

Product no.	Model no. (ERP)	Description	GTIN
35010001	560/7 IMP	Extension 3/4 " L.180mm	4018754017324
35010002	560/10 IMP	Extension 3/4 " L.250mm	4018754017331
35010003	560/13 IMP	Extension 3/4 " L.330mm	4018754017348

## GTIN-Code.

