



## IMPACT extensions 1/2"

### 509IMP

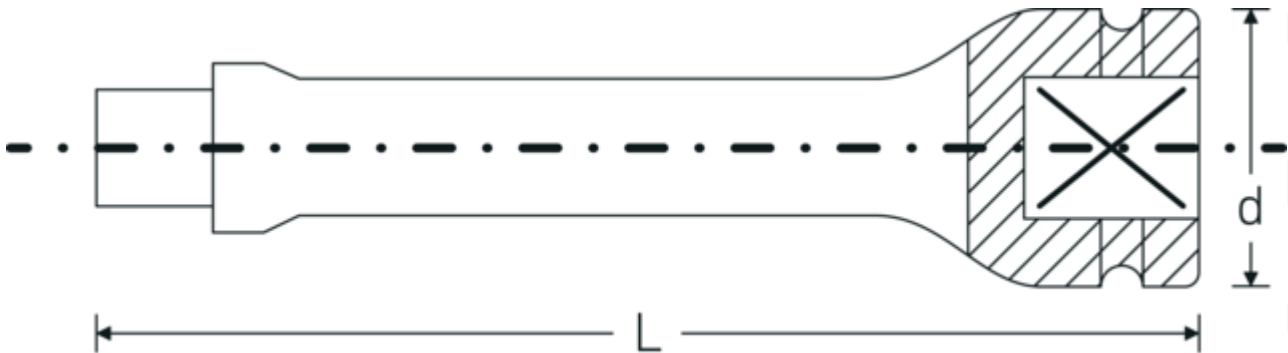


Product no. **33010001**  
GTIN **4018754017157**  
Model **509/2 IMP**

**Label.** Extension 1/2 " L.52mm

- Features.**
- 1/2" square drive
  - Chrome Alloy Steel, gunmetal finish

## Technical Drawing.



## Technical Attributes.

External square drive (inch)	1/2
Internal square drive (inch)	1/2 "
d	30 mm
Size	2
Length mm (L)	52 mm

## Logistics data.

Depth mm (IFS)	52
Width mm (IFS)	30
Height mm (IFS)	30
Length (packed, mm)	151
Width (packed, mm)	31
Height (packed, mm)	53
Volume (packed, dm3)	0.248093 dm3

<b>Product no.</b>	33010001
<b>Weight (gross, kg)</b>	0,755
<b>Weight PAP (kg)</b>	0,000
<b>Weight PVC (kg)</b>	0,006
<b>GTIN</b>	4018754017157
<b>Country of origin AWR</b>	GERMANY
<b>Region of origin</b>	Nordrhein-Westfalen
<b>WEEE/ElektroG</b>	nicht ear-pflichtig
<b>Customs tariff no.</b>	82042000
<b>Packing standard</b>	5
<b>Weight</b>	155 g

## Variants.

Product no.	Model no. (ERP)	Description	GTIN
33010001	509/2 IMP	Extension 1/2 " L.52mm	4018754017157
33010002	509/5 IMP	Extension 1/2 " L.130mm	4018754017164
33010003	509/10 IMP	Extension 1/2 " L.255mm	4018754017171

## GTIN-Code.



### STAHLWILLE Eduard Wille GmbH & Co. KG

Lindenallee 27 · 42349 Wuppertal · Germany · Phone: +49 202 4791-0 · Fax: +49 202 4791-200  
info@stahlwille.de · www.stahlwille.com · Copyright by STAHLWILLE Eduard Wille GmbH & Co. KG, Wuppertal  
Copyright by STAHLWILLE Eduard Wille GmbH & Co. KG, Wuppertal