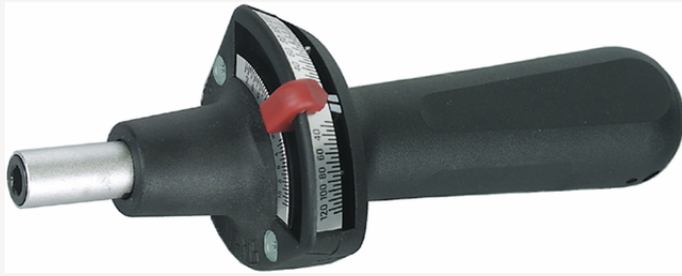


Torque screwdrivers TORSIOMETER

760/60



Product no. 51040060
GTIN 4018754118939
Model 760/60



Label.

Torque screwdriver TORSIOMETER Model 760/60 Hex 1/4"

Features.

- indicating type
- the measuring element is a torsional leaf spring
- clockwise tightening (with trailing pointer) and anticlockwise tightening
- with 1/4" internal hex drive (F 6.3 DIN 3126)
- comparative scale in in·lb and cursor
- inserts and adaptors with external hex E 6.3 (1/4")
- DIN 3126/ISO 1173 are securely held and firmly controlled in the mounting shaft
- to attach 1/4" sockets, please order adaptor No 3115
- certificate in accordance with DIN EN ISO 6789-2:2017
- **display deviation value $\pm 4\%$**

Advantages.

Display

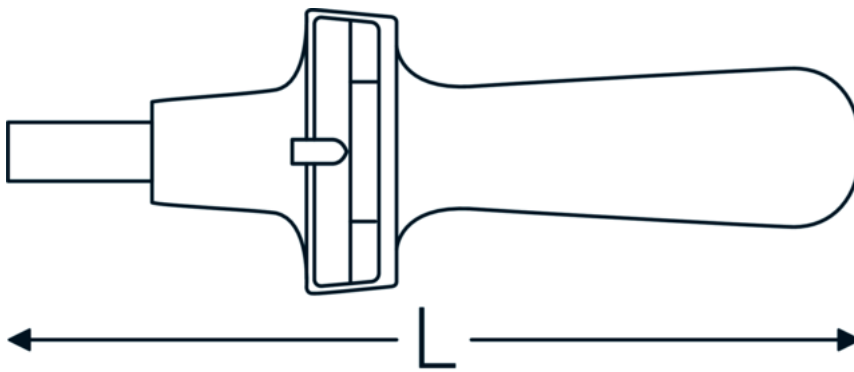
Technologies and features.



Factory calibration certificate (ISO calibration)

Our torque tools, transducers and test equipment are delivered with a factory calibration certificate in accordance with DIN EN ISO 6789-2 and based on DKD-R 10-8 for traceability of the measuring equipment.

Technical Drawing.



Technical Attributes.

Scale division cN·m	20 cN·m
Measuring range cN·m	120-600 cN·m
Measuring range in·lb	12-52 in·lb
Internal hex drive (mm)	F 6,3 mm
DIN	DIN 3126
Size	60
Internal hex drive [inch]	1/4 "
Length mm (L)	185 mm

Logistics data.

Depth mm (IFS)	205
Width mm (IFS)	90
Height mm (IFS)	90
Length (packed, mm)	220
Width (packed, mm)	100
Height (packed, mm)	100
Volume (packed, dm ³)	2.2 dm ³
Product no.	51040060
Weight (gross, kg)	0,465
Weight PAP (kg)	0,023
Weight PVC (kg)	0,000
GTIN	4018754118939
Country of origin AWR	GERMANY
Region of origin	Nordrhein-Westfalen
WEEE/ElektroG	nicht ear-pflichtig
Customs tariff no.	82041100
Packing standard	1
Weight	230 g

Variants.

Product no.	Model no. (ERP)	Description	GTIN
51040007	760/7,5	Torque screwdriver TORSIOMETER Model 760/7,5 Hex 1/4"	4018754118908
51040015	760/15	Torque screwdriver TORSIOMETER Model 760/15 Hex 1/4"	4018754118915

51040030	760/30	Torque screwdriver TORSIOMETER Model 760/30 Hex 1/4"	4018754118922
51040060	760/60	Torque screwdriver TORSIOMETER Model 760/60 Hex 1/4"	4018754118939

GTIN-Code.



STAHLWILLE Eduard Wille GmbH & Co. KG

Lindenallee 27 · 42349 Wuppertal · Germany · Phone: +49 202 4791-0 · Fax: +49 202 4791-200
info@stahlwille.de · www.stahlwille.com · Copyright by STAHLWILLE Eduard Wille GmbH & Co. KG, Wuppertal
Copyright by STAHLWILLE Eduard Wille GmbH & Co. KG, Wuppertal