



**Calibration system No. 7706,
complete**

7706

Product no. **96521070**
GTIN **4018754179152**
Model **7706-10PC**

Label. Calibration system complete

Technical Attributes.

Width mm (b) 800 mm
Height mm (h) 520 mm
Length mm (L) 1200 mm

Logistics data.

Depth mm (IFS) 1200
Width mm (IFS) 800
Height mm (IFS) 520
Length (packed, mm) 1200
Width (packed, mm) 800
Height (packed, mm) 520
Volume (packed, dm3) 499.2 dm3
Product no. 96521070
Weight (gross, kg) 75,600
Weight PAP (kg) 0,000
Weight PVC (kg) 0,000
GTIN 4018754179152
Country of origin AWR GERMANY
Region of origin Nordrhein-Westfalen
WEEE/ElektroG Großgeräte B2B
Customs tariff no. 90318080
Packing standard 1
Weight 75600 g

Parts list.



83070026
Inlay cover foam



83070016
Inlay cover foam



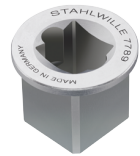
83070006
Inlay cover foam



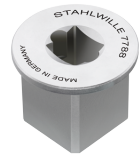
81320002
Plastic case



11030010
Square drive adapter



58521089
Square drive adapter



58521088
Square drive adapter



58521087
Square drive adapter



52110054
Cable



81500003
Plastic box, empty



58243040
Calibrating square
drive insert tools



58243020
Calibrating square
drive insert tools



58243005
Calibrating square
drive insert tools



58243004
Calibrating square
drive insert tools



83071030
Insert for plastic box



52110191
Extension unit for
No.7791, 7794-1 and
7794-2 up to 1000 N·m



52110091
Mechanical calibration
device



52110051
Jack cable



52111057
USB adapter

