

## Sockets 3/4", metric, extra deep

40L



Product no. **01020055**  
GTIN **4018754000296**  
Model **40 L 5,5**



Label. 1/4 " Socket Wrench size 5,5mm L.50mm

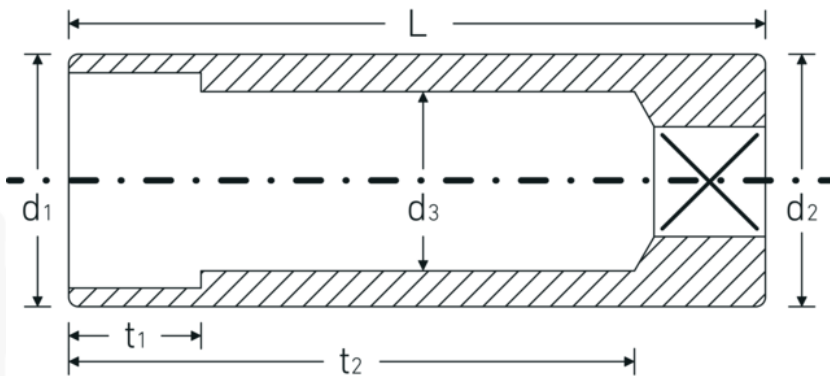
## Technologies and features.



### High Performance Quality (HPQ®)

Our HPQ® tool is made of wear-resistant high-performance steel, yet is thin-walled and lightweight. It withstands high torques and is ideal for work in confined spaces such as turbines.

## Technical Drawing.



## Technical Attributes.

<b>Drive profile</b>	hex AS-Drive®
<b>Internal square drive (inch)</b>	1/4 "
<b>d1</b>	8,5 mm
<b>d2</b>	10,7 mm
<b>d3</b>	4,5 mm
<b>DIN</b>	DIN 3124 / ISO 2725-1, ASME B 107.5M, DIN EN 3710, DIN EN 3709
<b>Length mm (L)</b>	50 mm
<b>Width across flats [mm]</b>	5,5 mm
<b>t1</b>	6 mm
<b>t2</b>	42 mm

## Logistics data.

<b>Depth mm (IFS)</b>	50
<b>Width mm (IFS)</b>	11
<b>Height mm (IFS)</b>	11
<b>Length (packed, mm)</b>	50
<b>Width (packed, mm)</b>	44
<b>Height (packed, mm)</b>	35
<b>Volume (packed, dm3)</b>	0.077 dm3
<b>Product no.</b>	01020055
<b>Weight (gross, kg)</b>	0,174
<b>Weight PAP (kg)</b>	0,000
<b>Weight PVC (kg)</b>	0,003
<b>GTIN</b>	4018754000296
<b>Country of origin</b>	GERMANY
<b>Region of origin</b>	Nordrhein-Westfalen
<b>WEEE/ElektroG</b>	nicht ear-pflichtig
<b>Customs tariff no.</b>	82042000
<b>Packing standard</b>	10
<b>Weight</b>	17 g

## Variants.

Product no.	Model no. (ERP)	Description	GTIN
01020032	40L 3,2	1/4 " Socket Wrench size 3,2mm L.50mm	4018754286225
01020004	40 L 4	1/4 " Socket Wrench size 4mm L.50mm	4018754000180
01020045	40 L 4,5	1/4 " Socket Wrench size 4,5mm L.50mm	4018754000289
01020005	40 L 5	1/4 " Socket Wrench size 5mm L.50mm	4018754000197
01020055	40 L 5,5	1/4 " Socket Wrench size 5,5mm L.50mm	4018754000296
01020006	40 L 6	1/4 " Socket Wrench size 6mm L.50mm	4018754000203
01020007	40 L 7	1/4 " Socket Wrench size 7mm L.50mm	4018754000210
01020008	40 L 8	1/4 " Socket Wrench size 8mm L.50mm	4018754000227
01020009	40 L 9	1/4 " Socket Wrench size 9mm L.50mm	4018754000234
01020010	40 L 10	1/4 " Socket Wrench size 10mm L.50mm	4018754000241
01020011	40 L 11	1/4 " Socket Wrench size 11mm L.50mm	4018754000258
01020012	40 L 12	1/4 " Socket Wrench size 12mm L.50mm	4018754000265
01020013	40 L 13	1/4 " Socket Wrench size 13mm L.50mm	4018754000272

## GTIN-Code.

