

Sockets 3/4", metric, extra deep

40L



Product no. 01020009
GTIN 4018754000234
Model 40 L 9



Label. 1/4 " Socket Wrench size 9mm L.50mm

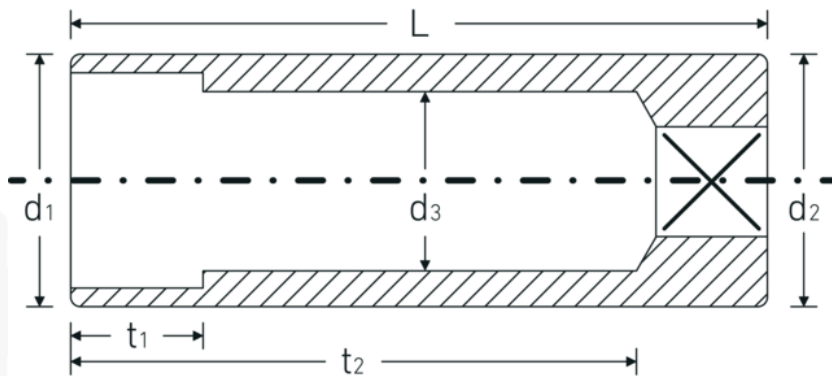
Technologies and features.



High Performance Quality (HPQ®)

Our HPQ® tool is made of wear-resistant high-performance steel, yet is thin-walled and lightweight. It withstands high torques and is ideal for work in confined spaces such as turbines.

Technical Drawing.



Technical Attributes.

| | |
|-------------------------------------|---|
| Drive profile | hex AS-Drive® |
| Internal square drive (inch) | 1/4 " |
| d1 | 12,8 mm |
| d2 | 12,8 mm |
| d3 | 8 mm |
| DIN | DIN 3124 / ISO 2725-1, ASME B 107.5M, DIN EN 3710, DIN EN 3709 |
| Length mm (L) | 50 mm |
| Width across flats [mm] | 9 mm |
| t1 | 8 mm |
| t2 | 39,8 mm |

Logistics data.

| | |
|-----------------------------|---------------------|
| Depth mm (IFS) | 50 |
| Width mm (IFS) | 13 |
| Height mm (IFS) | 13 |
| Length (packed, mm) | 72 |
| Width (packed, mm) | 50 |
| Height (packed, mm) | 32 |
| Volume (packed, dm3) | 0.1152 dm3 |
| Product no. | 01020009 |
| Weight (gross, kg) | 0,314 |
| Weight PAP (kg) | 0,000 |
| Weight PVC (kg) | 0,003 |
| GTIN | 4018754000234 |
| Country of origin | GERMANY |
| Region of origin | Nordrhein-Westfalen |
| WEEE/ElektroG | nicht ear-pflichtig |
| Customs tariff no. | 82042000 |
| Packing standard | 10 |
| Weight | 31 g |

Variants.

| Product no. | Model no. (ERP) | Description | GTIN |
|-------------|-----------------|---------------------------------------|---------------|
| 01020032 | 40L 3,2 | 1/4 " Socket Wrench size 3,2mm L.50mm | 4018754286225 |
| 01020004 | 40 L 4 | 1/4 " Socket Wrench size 4mm L.50mm | 4018754000180 |
| 01020045 | 40 L 4,5 | 1/4 " Socket Wrench size 4,5mm L.50mm | 4018754000289 |
| 01020005 | 40 L 5 | 1/4 " Socket Wrench size 5mm L.50mm | 4018754000197 |
| 01020055 | 40 L 5,5 | 1/4 " Socket Wrench size 5,5mm L.50mm | 4018754000296 |
| 01020006 | 40 L 6 | 1/4 " Socket Wrench size 6mm L.50mm | 4018754000203 |
| 01020007 | 40 L 7 | 1/4 " Socket Wrench size 7mm L.50mm | 4018754000210 |
| 01020008 | 40 L 8 | 1/4 " Socket Wrench size 8mm L.50mm | 4018754000227 |
| 01020009 | 40 L 9 | 1/4 " Socket Wrench size 9mm L.50mm | 4018754000234 |
| 01020010 | 40 L 10 | 1/4 " Socket Wrench size 10mm L.50mm | 4018754000241 |
| 01020011 | 40 L 11 | 1/4 " Socket Wrench size 11mm L.50mm | 4018754000258 |
| 01020012 | 40 L 12 | 1/4 " Socket Wrench size 12mm L.50mm | 4018754000265 |
| 01020013 | 40 L 13 | 1/4 " Socket Wrench size 13mm L.50mm | 4018754000272 |

GTIN-Code.

