



VDE socket extensions 1/2"

12177 VDE

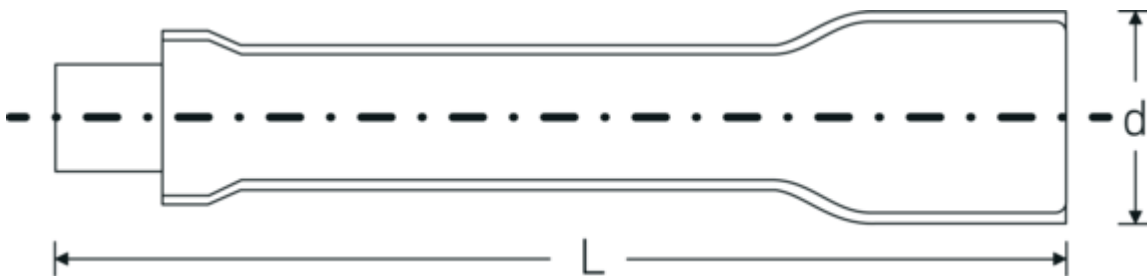


Product no. **13420003**
GTIN **4018754253890**
Model **12177 VDE-10**



Label. 1/2 " VDE extension L.273mm

Technical Drawing.



Technical Attributes.

External square drive (inch)	1/2
Internal square drive (inch)	1/2 "
d	27 mm
DIN	DIN EN 60900
Size	10
Length mm (L)	273 mm

Logistics data.

Depth mm (IFS)	270
Width mm (IFS)	28
Height mm (IFS)	28
Length (packed, mm)	285
Width (packed, mm)	30
Height (packed, mm)	30
Volume (packed, dm3)	0.2565 dm3
Product no.	13420003
Weight (gross, kg)	0,395
Weight PAP (kg)	0,000
Weight PVC (kg)	0,006

GTIN	4018754253890
Country of origin	GERMANY
Region of origin	Nordrhein-Westfalen
WEEE/ElektroG	nicht ear-pflichtig
Customs tariff no.	82042000
Packing standard	1
Weight	380 g

Variants.

Product no.	Model no. (ERP)	Description	GTIN
13420001	12177 VDE-3	1/2 " VDE extension L.93mm	4018754253876
13420002	12177 VDE-5	1/2 " VDE extension L.148mm	4018754253883
13420003	12177 VDE-10	1/2 " VDE extension L.273mm	4018754253890

GTIN-Code.

