



VDE socket extensions 3/8"

12167 VDE

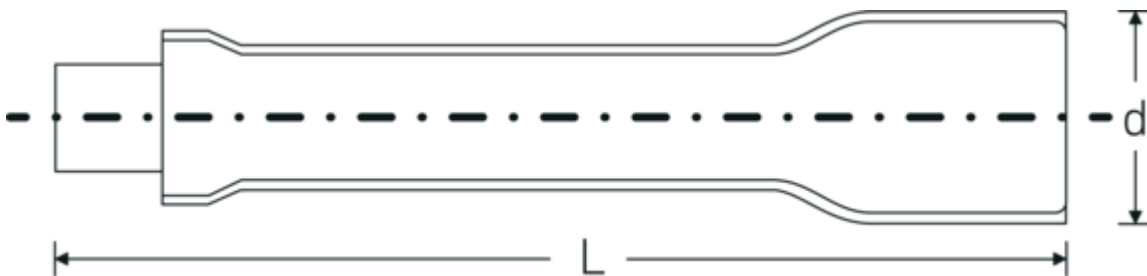


Product no. 12420003
GTIN 4018754253852
Model 12167 VDE-10



Label. 3/8 " VDE extension L.258mm

Technical Drawing.



Technical Attributes.

External square drive (inch)	3/8
Internal square drive (inch)	3/8 "
d	23 mm
DIN	DIN EN 60900
Size	10
Length mm (L)	258 mm

Logistics data.

Depth mm (IFS)	255
Width mm (IFS)	23
Height mm (IFS)	23
Length (packed, mm)	280
Width (packed, mm)	35
Height (packed, mm)	35
Volume (packed, dm ³)	0.343 dm ³
Product no.	12420003
Weight (gross, kg)	0,240
Weight PAP (kg)	0,000
Weight PVC (kg)	0,005

GTIN	4018754253852
Country of origin	GERMANY
Region of origin	Nordrhein-Westfalen
WEEE/ElektroG	nicht ear-pflichtig
Customs tariff no.	82042000
Packing standard	1
Weight	224 g

Variants.

Product no.	Model no. (ERP)	Description	GTIN
12420001	12167 VDE-3	3/8 " VDE extension L.94mm	4018754253838
12420002	12167 VDE-6	3/8 " VDE extension L.178mm	4018754253845
12420003	12167 VDE-10	3/8 " VDE extension L.258mm	4018754253852

GTIN-Code.

