

Sockets 1/4" inch, extra deep

40aDL



Product no. 01640022
GTIN 4018754001699
Model 40 ADL 11/32



Label. 1/4 " Socket Wrench size 11/32" L.50mm

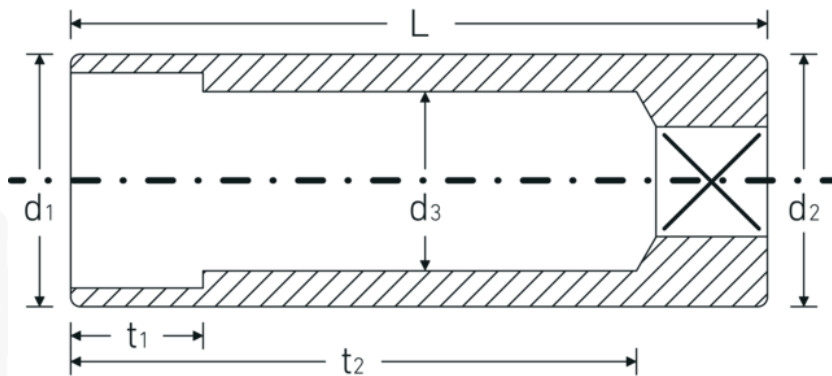
Technologies and features.



High Performance Quality (HPQ®)

Our HPQ® tool is made of wear-resistant high-performance steel, yet is thin-walled and lightweight. It withstands high torques and is ideal for work in confined spaces such as turbines.

Technical Drawing.



Technical Attributes.

Drive profile	bi-hex AS-Drive®
Internal square drive (inch)	1/4 "
d1	12,7 mm
d2	12,7 mm
d3	8,1 mm
Length mm (L)	50 mm
Wrench size [inch]	11/32 "
t1	9 mm
t2	39,7 mm

Logistics data.

Depth mm (IFS)	50
Width mm (IFS)	13
Height mm (IFS)	13
Length (packed, mm)	110
Width (packed, mm)	80
Height (packed, mm)	13
Volume (packed, dm3)	0.1144 dm3
Product no.	01640022
Weight (gross, kg)	0,130
Weight PAP (kg)	0,000
Weight PVC (kg)	0,003
GTIN	4018754001699
Country of origin	GERMANY
Region of origin	Nordrhein-Westfalen
WEEE/ElektroG	nicht ear-pflichtig
Customs tariff no.	82042000
Packing standard	5
Weight	26 g

Variants.

Product no.	Model no. (ERP)	Description	GTIN
01640010	40ADL 5/32	1/4 " Socket Wrench size 5/32" L.50mm	4018754173600
01640012	40 ADL 3/16	1/4 " Socket Wrench size 3/16" L.50mm	4018754001644
01640014	40 ADL 7/32	1/4 " Socket Wrench size 7/32" L.50mm	4018754001651
01640016	40 ADL 1/4	1/4 " Socket Wrench size 1/4" L.50mm	4018754001668
01640018	40 ADL 9/32	1/4 " Socket Wrench size 9/32" L.50mm	4018754001675
01640020	40 ADL 5/16	1/4 " Socket Wrench size 5/16" L.50mm	4018754001682
01640022	40 ADL 11/32	1/4 " Socket Wrench size 11/32" L.50mm	4018754001699
01640024	40 ADL 3/8	1/4 " Socket Wrench size 3/8" L.50mm	4018754001705
01640028	40 ADL 7/16	1/4 " Socket Wrench size 7/16" L.50mm	4018754001712
01640032	40 ADL 1/2	1/4 " Socket Wrench size 1/2" L.50mm	4018754001729
01640034	40 ADL 9/16	1/4 " Socket Wrench size 9/16" L.50mm	4018754001736

GTIN-Code.

