



## VDE socket extensions 3/8"

### 12167 VDE

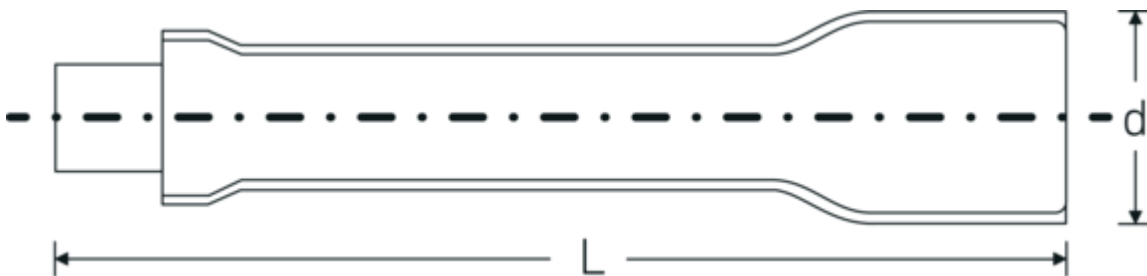


Product no. 12420001  
GTIN 4018754253838  
Model 12167 VDE-3



Label. 3/8 " VDE extension L.94mm

## Technical Drawing.



## Technical Attributes.

|                              |              |
|------------------------------|--------------|
| External square drive (inch) | 3/8          |
| Internal square drive (inch) | 3/8 "        |
| d                            | 23 mm        |
| DIN                          | DIN EN 60900 |
| Size                         | 3            |
| Length mm (L)                | 94 mm        |

## Logistics data.

|                                   |                       |
|-----------------------------------|-----------------------|
| Depth mm (IFS)                    | 92                    |
| Width mm (IFS)                    | 23                    |
| Height mm (IFS)                   | 23                    |
| Length (packed, mm)               | 120                   |
| Width (packed, mm)                | 35                    |
| Height (packed, mm)               | 35                    |
| Volume (packed, dm <sup>3</sup> ) | 0.147 dm <sup>3</sup> |
| Product no.                       | 12420001              |
| Weight (gross, kg)                | 0,085                 |
| Weight PAP (kg)                   | 0,000                 |
| Weight PVC (kg)                   | 0,003                 |

|                           |                     |
|---------------------------|---------------------|
| <b>GTIN</b>               | 4018754253838       |
| <b>Country of origin</b>  | GERMANY             |
| <b>Region of origin</b>   | Nordrhein-Westfalen |
| <b>WEEE/ElektroG</b>      | nicht ear-pflichtig |
| <b>Customs tariff no.</b> | 82042000            |
| <b>Packing standard</b>   | 1                   |
| <b>Weight</b>             | 84 g                |

## Variants.

| Product no. | Model no. (ERP) | Description                 | GTIN          |
|-------------|-----------------|-----------------------------|---------------|
| 12420001    | 12167 VDE-3     | 3/8 " VDE extension L.94mm  | 4018754253838 |
| 12420002    | 12167 VDE-6     | 3/8 " VDE extension L.178mm | 4018754253845 |
| 12420003    | 12167 VDE-10    | 3/8 " VDE extension L.258mm | 4018754253852 |

## GTIN-Code.

