



VDE socket extensions 1/2"

12177 VDE

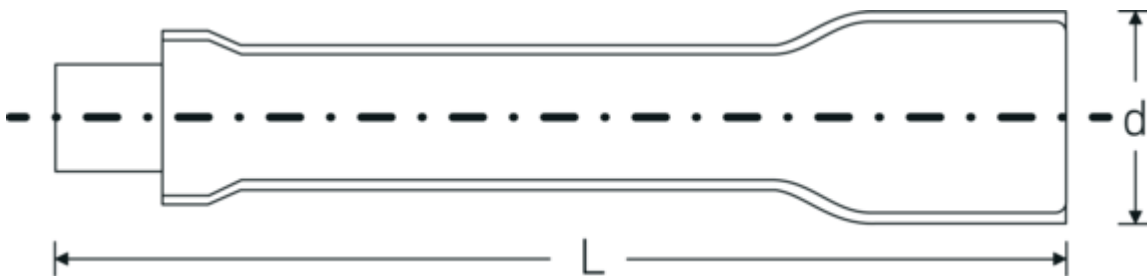


Product no. **13420001**
GTIN **4018754253876**
Model **12177 VDE-3**



Label. 1/2 " VDE extension L.93mm

Technical Drawing.



Technical Attributes.

External square drive (inch)	1/2
Internal square drive (inch)	1/2 "
d	27 mm
DIN	DIN EN 60900
Size	3
Length mm (L)	93 mm

Logistics data.

Depth mm (IFS)	91
Width mm (IFS)	27
Height mm (IFS)	27
Length (packed, mm)	100
Width (packed, mm)	35
Height (packed, mm)	35
Volume (packed, dm ³)	0.1225 dm ³
Product no.	13420001
Weight (gross, kg)	0,135
Weight PAP (kg)	0,000
Weight PVC (kg)	0,002

GTIN	4018754253876
Country of origin	GERMANY
Region of origin	Nordrhein-Westfalen
WEEE/ElektroG	nicht ear-pflichtig
Customs tariff no.	82042000
Packing standard	1
Weight	130 g

Variants.

Product no.	Model no. (ERP)	Description	GTIN
13420001	12177 VDE-3	1/2 " VDE extension L.93mm	4018754253876
13420002	12177 VDE-5	1/2 " VDE extension L.148mm	4018754253883
13420003	12177 VDE-10	1/2 " VDE extension L.273mm	4018754253890

GTIN-Code.

