



Electronic diagonal cutter

6710

Product no. **67106000**
GTIN **4018754333226**
Model **6710 ELEKTRONIK-SCHRAEGSCHNEIDER M. FASE, POL., 120MM, 2K-GRIFF, LANGE SCHNEIDE**



Label.

Electronic diagonal cutter L.120mm Head polished Handles 2-component handles

Features.

- with 2-component handles
- extended handle cover for better slip resistance
- ergonomic thumb rest improves handling of the pliers
- DIN ISO 9654
- for demanding work in electronics / precision mechanics
- long cutting edge, 20° angle
- long service life, no play, push-through joint
- with double leaf spring for smooth movement
- cutting edges induction hardened to approx. 62 HRC

Advantages.

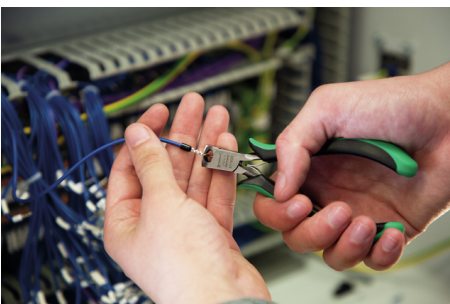
Cutting geometry rotated by 90° and angled sideways enables precise work e.g. on electronic boards.

The box joint with zero backlash enables highest precision with a long lifetime.

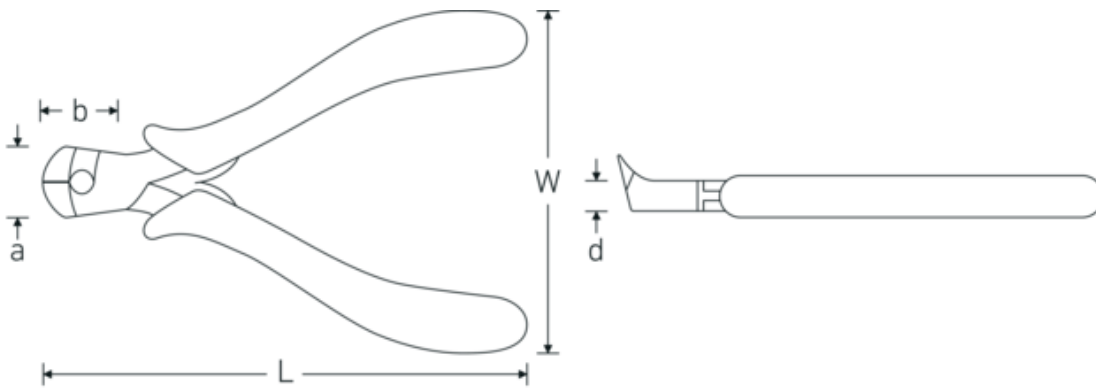
Self-opening and easy-running blades thanks to built-in double spring for gentle and smooth movements.

Ergonomic thumb rest improves handling of the pliers.

The 2-component handle ensures secure grip and accurate operation.



Technical Drawing.



Technical Attributes.

Width mm (b)	56 mm
DIN	DIN ISO 9654
Handles	2-component handles
Head	polished
Kopfbreite-Elektronik-mm (a)	13 mm
Kopfstärke-Elektronik-mm (d)	18 mm
Length mm (L)	120 mm
Medium-hard wire (2)	0,3 mm
Kopflänge-Elektronik-mm (b)	6 mm
Soft wire (1)	0,6 mm

Logistics data.

Depth mm (IFS)	120
Width mm (IFS)	90
Height mm (IFS)	18
Length (packed, mm)	120
Width (packed, mm)	90
Height (packed, mm)	18
Volume (packed, dm3)	0.1944 dm3
Art. no.	67106000
Weight (gross, kg)	0,078
Weight PAP (kg)	0,000
Weight PVC (kg)	0,005
GTIN	4018754333226
Country of origin	GERMANY
Region of origin	Thüringen
WEEE/ElektroG	nicht ear-pflichtig
Customs tariff no.	82032000
Packing standard	1
Weight	78 g

Variants.

Art. no.	Model no. (ERP)	Description	GTIN
67106000	6710 ELEKTRONIK-SCHRAEGSCHNEIDER M. FASE, POL., 120MM, 2K-GRIFF, LANGE SCHNEIDE	Electronic diagonal cutter L.120mm Head polished Handles 2-component handles	4018754333226

GTIN-Code.



Images.



STAHLWILLE Eduard Wille GmbH & Co. KG

Lindenallee 27 · 42349 Wuppertal · Germany · Phone: +49 202 4791-0 · Fax: +49 202 4791-200
info@stahlwille.de · www.stahlwille.com · Copyright by STAHLWILLE Eduard Wille GmbH & Co. KG, Wuppertal
Copyright by STAHLWILLE Eduard Wille GmbH & Co. KG, Wuppertal