



## Socket

### 40aDL

Product no. **01640014**  
GTIN **4018754001651**  
Model **40 ADL 7/32**



**Label.** 1/4 " Socket Spanner size 7/32" L.50mm

**Features.**

- Long
- ASME B 107.1, Fed. Spec. GGG-W-641, SAE AS 954-E
- HPQ® heavy-duty steel, chrome-plated

## Advantages.

Long

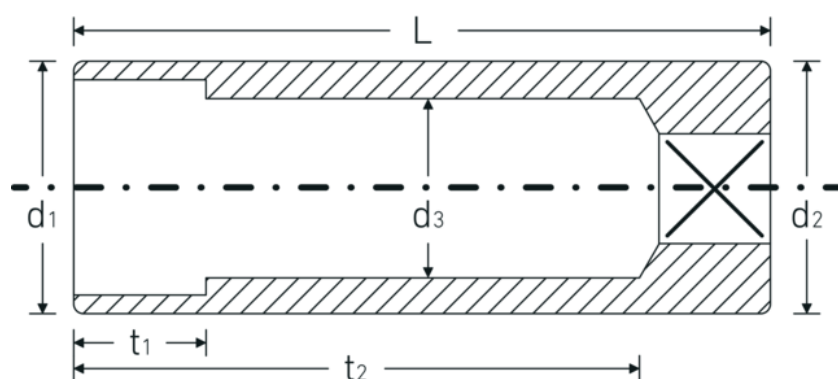
## Technologies and features.



### High Performance Quality (HPQ®)

Our HPQ® tool is made of wear-resistant high-performance steel, yet is thin-walled and lightweight. It withstands high torques and is ideal for work in confined spaces such as turbines.

## Technical Drawing.



## Technical Attributes.

Drive profile	bi-hex AS-Drive®
Internal square drive (inch)	1/4 "
d1	8,6 mm
d2	10,7 mm
d3	5 mm
Length mm (L)	50 mm
Spanner size [inch]	7/32 "
t1	6 mm
t2	42 mm

## Logistics data.

Depth mm (IFS)	50
Width mm (IFS)	11
Height mm (IFS)	11
Length (packed, mm)	100
Width (packed, mm)	50
Height (packed, mm)	12
Volume (packed, dm3)	0.06 dm3
Art. no.	01640014
Weight (gross, kg)	0,080
Weight PAP (kg)	0,000
Weight PVC (kg)	0,003
GTIN	4018754001651
Country of origin	GERMANY
Region of origin	Nordrhein-Westfalen
WEEE/ElektroG	nicht ear-pflichtig
Customs tariff no.	82042000
Packing standard	5
Weight	16 g

## Variants.

Art. no.	Model no. (ERP)	Description	GTIN
01640010	40ADL 5/32	1/4 " Socket Spanner size 5/32" L.50mm	4018754173600
01640012	40 ADL 3/16	1/4 " Socket Spanner size 3/16" L.50mm	4018754001644
01640014	40 ADL 7/32	1/4 " Socket Spanner size 7/32" L.50mm	4018754001651

01640016	40 ADL 1/4	1/4 " Socket Spanner size 1/4" L.50mm	4018754001668
01640018	40 ADL 9/32	1/4 " Socket Spanner size 9/32" L.50mm	4018754001675
01640020	40 ADL 5/16	1/4 " Socket Spanner size 5/16" L.50mm	4018754001682
01640022	40 ADL 11/32	1/4 " Socket Spanner size 11/32" L.50mm	4018754001699
01640024	40 ADL 3/8	1/4 " Socket Spanner size 3/8" L.50mm	4018754001705
01640028	40 ADL 7/16	1/4 " Socket Spanner size 7/16" L.50mm	4018754001712
01640032	40 ADL 1/2	1/4 " Socket Spanner size 1/2" L.50mm	4018754001729
01640034	40 ADL 9/16	1/4 " Socket Spanner size 9/16" L.50mm	4018754001736

## GTIN-Code.



**STAHLWILLE Eduard Wille GmbH & Co. KG**

Lindenallee 27 · 42349 Wuppertal · Germany · Phone: +49 202 4791-0 · Fax: +49 202 4791-200

info@stahlwille.de · www.stahlwille.com · Copyright by STAHLWILLE Eduard Wille GmbH & Co. KG, Wuppertal

Copyright by STAHLWILLE Eduard Wille GmbH & Co. KG, Wuppertal