



VDE socket extensions 3/8"

12167 VDE

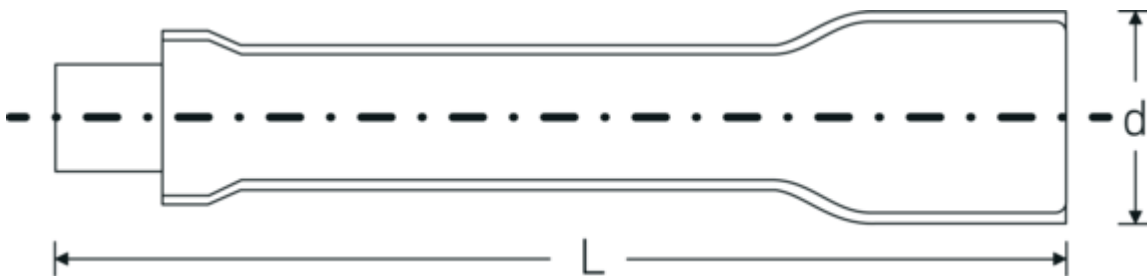


Product no. 12420002
GTIN 4018754253845
Model 12167 VDE-6



Label. 3/8 " VDE extension L.178mm

Technical Drawing.



Technical Attributes.

External square drive (inch)	3/8
Internal square drive (inch)	3/8 "
d	23 mm
DIN	DIN EN 60900
Size	6
Length mm (L)	178 mm

Logistics data.

Depth mm (IFS)	175
Width mm (IFS)	24
Height mm (IFS)	24
Length (packed, mm)	175
Width (packed, mm)	24
Height (packed, mm)	24
Volume (packed, dm ³)	0.1008 dm ³
Product no.	12420002
Weight (gross, kg)	0,162
Weight PAP (kg)	0,000
Weight PVC (kg)	0,004

GTIN	4018754253845
Country of origin	GERMANY
Region of origin	Nordrhein-Westfalen
WEEE/ElektroG	nicht ear-pflichtig
Customs tariff no.	82042000
Packing standard	1
Weight	162 g

Variants.

Product no.	Model no. (ERP)	Description	GTIN
12420001	12167 VDE-3	3/8 " VDE extension L.94mm	4018754253838
12420002	12167 VDE-6	3/8 " VDE extension L.178mm	4018754253845
12420003	12167 VDE-10	3/8 " VDE extension L.258mm	4018754253852

GTIN-Code.

