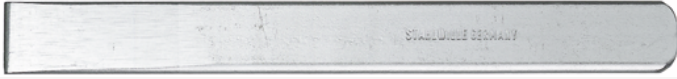




Grooving chisel

110



Product no. **70080001**
 GTIN **4018754040759**
 Model **110 SCHLITZMEISSEL 240 MM**

Label. Grooving chisel W.26mm L.240mm

Features.

- flat-oval
- Chrome Alloy Steel, painted silver

Advantages.

Flat-oval.

Technical Attributes.

Width mm (b)	26 mm
Length mm (L)	240 mm

Logistics data.

Depth mm (IFS)	242
Width mm (IFS)	26
Height mm (IFS)	7
Length (packed, mm)	251
Width (packed, mm)	53
Height (packed, mm)	35
Volume (packed, dm ³)	0.465605 dm ³
Art. no.	70080001
Weight (gross, kg)	1,575
Weight PAP (kg)	0,034
Weight PVC (kg)	0,000
GTIN	4018754040759
Country of origin	GERMANY
Region of origin	Nordrhein-Westfalen
WEEE/ElektroG	nicht ear-pflichtig

Customs tariff no. 82055980
Packing standard 5
Weight 298 g

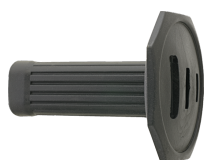
Variants.

Art. no.	Model no. (ERP)	Description	GTIN
70080001	110 SCHLITZMEISSEL 240 MM	Grooving chisel W.26mm L.240mm	4018754040759

GTIN-Code.



Accessories.



79160001
Finger protector

STAHLWILLE Eduard Wille GmbH & Co. KG

Lindenallee 27 · 42349 Wuppertal · Germany · Phone: +49 202 4791-0 · Fax: +49 202 4791-200
info@stahlwille.de · www.stahlwille.com · Copyright by STAHLWILLE Eduard Wille GmbH & Co. KG, Wuppertal
Copyright by STAHLWILLE Eduard Wille GmbH & Co. KG, Wuppertal